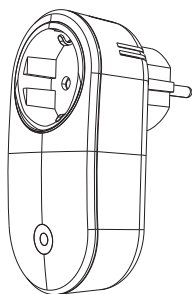




## Zigbee Euro Plug



**Installationsanleitung für Zigbee Euro Stecker**  
**Installation Manual for Zigbee to Zigbee Euro Plug**  
**Installatiehandleiding voor Zigbee Stekker**  
**Instructions d'installation pour Zigbee Socket**

V830006Z0W

### DE

#### SICHERHEITSHINWEISE

Das Gerät muss entsprechend der Anleitung in Betrieb genommen werden. Jede unsachgemäße Verwendung oder Montageart kann die Sicherheit beeinträchtigen.

Bei einem Defekt des Gerätes kontaktieren Sie unbedingt und unverzüglich den Händler oder Hersteller.

Die Wartungshinweise sind unbedingt zu beachten. Das Eindringen von Feuchtigkeit ist zu vermeiden.

Die Montageanleitung ist aufzubewahren.

Technische Änderungen vorbehalten.

Informationen zur Entsorgung entnehmen Sie unserer Website.

### EN

#### SAFETY INSTRUCTIONS

The device must be operated according to the instructions. Any improper use or installation can compromise safety.

In case of device defect, contact the dealer or manufacturer immediately. Maintenance instructions must be strictly followed. The ingress of moisture must be avoided. The installation manual must be kept. Technical changes reserved.

For information on disposal, please refer to our website.

### NL

#### VEILIGHEIDSIINSTRUCTIES

Het apparaat moet volgens de instructies in gebruik worden genomen. Elk onjuist gebruik of verkeerde installatie kan de veiligheid in gevaar brengen.

Bij een defect van het apparaat dient u onmiddellijk contact op te nemen met de dealer of fabrikant.

Onderhoudsinstructies moeten strikt worden opgevolgd. Het binnendringen van vocht moet worden vermeden. De installatiehandleiding moet worden bewaard. Technische wijzigingen voorbehouden.

Voor informatie over verwijdering, raadpleeg onze website.

### FR

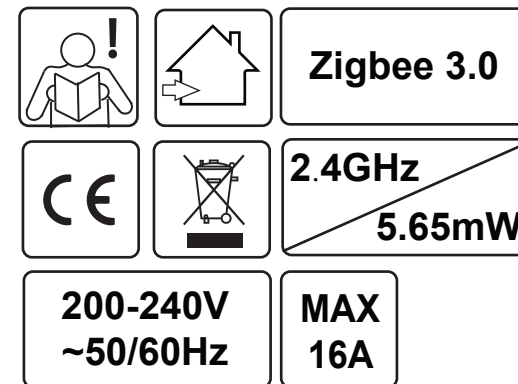
#### CONSIGNES DE SÉCURITÉ

Le dispositif doit être utilisé conformément aux instructions. Toute utilisation ou installation incorrecte peut compromettre la sécurité.

En cas de défaillance de l'appareil, contactez immédiatement le revendeur ou le fabricant. Les instructions d'entretien doivent être strictement suivies. L'intrusion d'humidité doit être évitée.

Le manuel d'installation doit être conservé. Modifications techniques réservées.

Pour des informations sur la l'élimination, veuillez consulter notre site Web.



Hiermit erklärt die VYSN GmbH, dass der hier beschriebene Funkanlagentyp der Richtlinie 2014/53/EU entspricht. Der vollständige Text der EU-Konformitätserklärung ist unter der folgenden Internetadresse verfügbar.

Hereby, VYSN GmbH declares that the radio equipment described here is in compliance with Directive 2014/53/EU. The full text of the EU declaration of conformity is available at the following website.

VYSN GmbH déclare par la présente que le type de dispositif radio décrit ici satisfait à la directive 2014/53/UE. Le texte complet de la déclaration de conformité UE est disponible à l'adresse Internet suivante.

Hiermee verklaart YSGmbH, dat het hier beschreven radiografische type voldoet aan de richtlijn 2014/53/EU. De volledige tekst van de EU-conformiteitsverklaring staat ter beschikking via het volgende internetadres.

Technische Modifikationen vorbehalten/  
 Subject to technical modifications/  
 Technische wijzigingen voorbehouden/  
 Sous réserve de modifications techniques

🌐 vysn-group.com  
 ✉ service@vysn-group.com

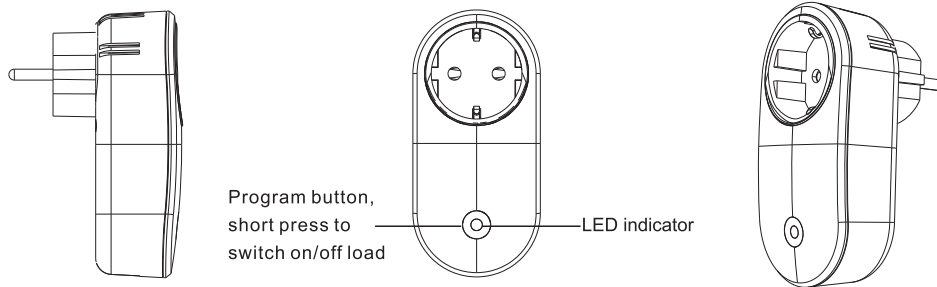
16.12.24/©VYSN GmbH/Siemensstr. 12/52525 Heinsberg



# Zigbee Smart Plug

**Important:** Read All Instructions Prior to Installation

## Function introduction



## Product Data

Zigbee profile	0x0104(ZHA)
Device ID	0x000A(Plug-in Unit)
Radio Frequency	2.4GHz
Input Voltage	AC200-240V, 50/60Hz
Max. Load	16A
Over Current Protection	16.1A
Operating temperature	0 to 40°C
Relative humidity	8% to 80%
Dimensions	114.8×54.8×74.7(mm)

LED Indicator State	Definition (16.1A Over Current)
Flashes red slowly	Over current
Stays solid orange	Load power > 2200W
Stays solid yellow	Load power 2001-2200W
Stays solid green	Load power 1501-2000W
Stays solid cyan	Load power 1001-1500W
Stays solid blue	Load power <= 1000W
Flashes purple slowly	Firmware updating via OTA
Stays solid white at a low brightness	Load switched off

- ZigBee smart plug based on latest ZigBee 3.0 protocol
- Enables to control ON/OFF of the load, supports max. 16 scenes
- ZigBee end device that supports Touchlink commissioning
- Supports find and bind mode to bind a ZigBee remote
- Supports zigbee green power and can bind max. 20 zigbee green power switches
- Supports temperature measurement
- Supports over current protection and power metering, enables to report power consumption to gateway
- Waterproof grade: IP20

## Safety & Warnings

- DO NOT install with power applied to device.
- DO NOT expose the device to moisture.

## Operation

1.Plug the smart plug into AC power source.

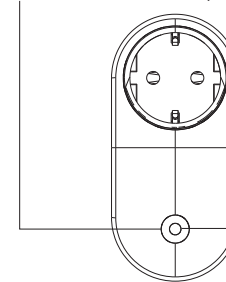
2.This ZigBee device is a wireless receiver that communicates with a variety of ZigBee compatible systems. This receiver receives and is controlled by wireless radio signals from the compatible ZigBee system.

### 3. Zigbee Network Pairing through Coordinator or Hub (Added to a Zigbee Network)

**Step 1:** Remove the device from previous zigbee network if it has already been added to, otherwise pairing will fail. Please refer to the part "**Factory Reset Manually**".

**Step 2:** From your ZigBee Controller or hub interface, choose to add lighting device and enter Pairing mode as instructed by the controller.

**Step 3:** Short press "Program" button 5 times continuously to set the device to network pairing mode, LED indicator will flash white fast, the network pairing mode will last until the plug is added to the Zigbee network.

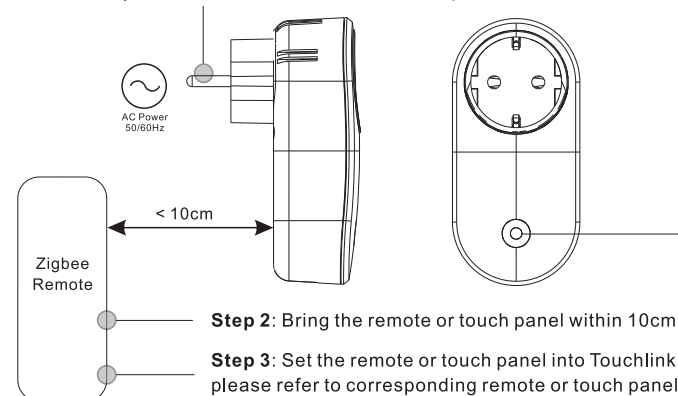


**Step 4:** LED indicator will flash white 6 times to indicate successful pairing. LED indicator will maintain the status before entering into network pairing mode if pairing fails.

### 4. TouchLink to a Zigbee Remote

**Step 1:** Method 1: Short press "Prog" button 4 times (Or re-power on the device 4 times) to start Touchlink commissioning under any circumstances, 180S timeout. Once timeout, repeat the operation.

Method 2: Add the device to a Zigbee network, the touchlink commissioning will start automatically after added successfully, 180S timeout, once timeout, reset power of the device to start touchlink commissioning again.



**Step 4:** There shall be indication on the remote for successful link and LED indicator of the plug will flash white twice.

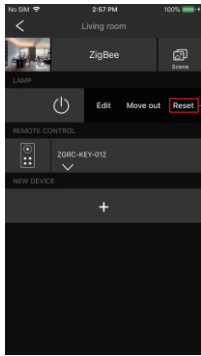
**Note:** 1) Directly TouchLink (both not added to a ZigBee network), each device can link with 1 remote.

2) TouchLink after both added to a ZigBee network, each device can link with max. 30 remotes.

3) To control by both gateway and remote, add remote and device to network first then TouchLink.

4) After TouchLink, the device can be controlled by the linked remotes.

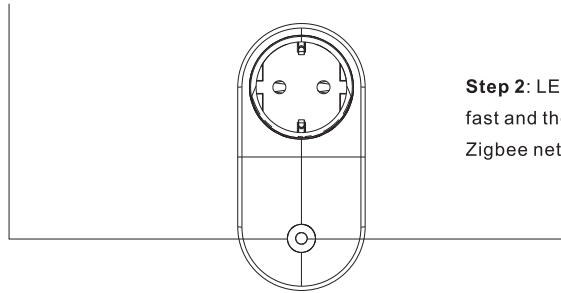
## 5. Removed from a Zigbee Network through Coordinator or Hub Interface



From your ZigBee controller or hub interface, choose to delete or reset the lighting device as instructed. LED indicator of the plug blinks white 3 times to indicate successful reset.

## 6. Factory Reset Manually

**Step 1:** Short press the "program" button 5 times continuously, the plug will enter into network pairing mode.

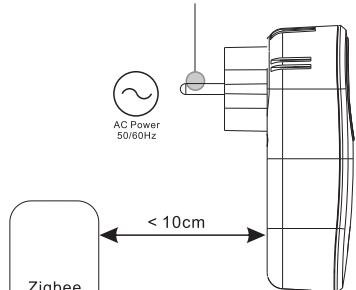


**Step 2:** LED indicator will flash white fast and the plug will try to join a Zigbee network.

## 7. Factory Reset through a Zigbee Remote (Touch Reset)

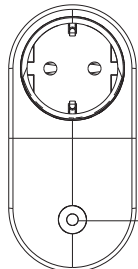
**Note:** Make sure the device already added to a network, the remote added to the same one or not added to any network.

**Step 1:** Re-power on the device to start TouchLink Commissioning, 180 seconds timeout, repeat the operation.



**Step 2:** Bring the remote or touch panel within 10cm of the lighting device.

**Step 3:** Set the remote or touch panel into Touch Reset procedure to reset the device, please refer to corresponding remote or touch panel manual to learn how.

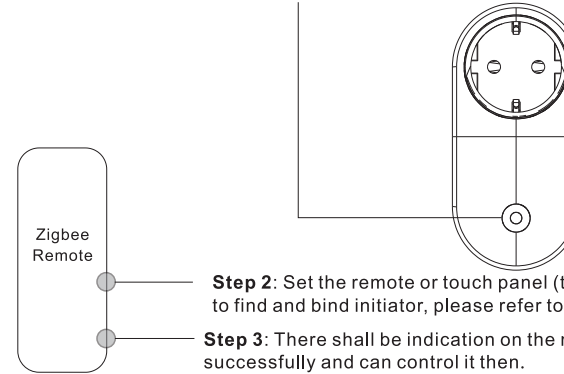


**Step 4:** There shall be indication on the remote for successful reset and LED indicator of the plug will flash white 3 times.

## 8. Find and Bind Mode

**Note:** Make sure both the device and remote are added to the same gateway that supports find and bind.

**Step 1:** Short press "Prog." button 3 times to start Find and Bind mode (LED indicator flashes white slowly) to find and bind target node, 180 seconds timeout, repeat the operation.

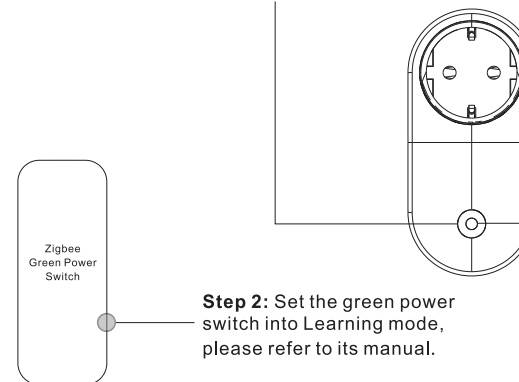


**Step 2:** Set the remote or touch panel (target node) into find and bind mode, and enable it to find and bind initiator, please refer to corresponding remote or touch panel manual.

**Step 3:** There shall be indication on the remote or touch panel that it bind the device successfully and can control it then.

## 9. Learning to a Zigbee Green Power Switch

**Step 1:** Short press "Program" button 4 times to start Learning to GP switch mode (LED indicator flashes twice), 180 seconds timeout, repeat the operation.



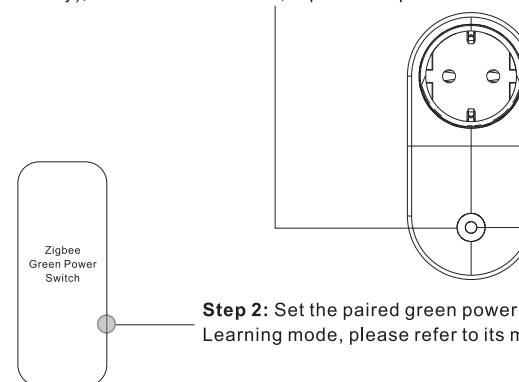
**Step 2:** Set the green power switch into Learning mode, please refer to its manual.

**Step 3:** LED indicator will flash twice to indicate successful learning. Then the switch can control the device.

**Note:** Each device can learn to max. 20 zigbee green power switches.

## 10. Delete Learning to a Zigbee Green Power Switch

**Step 1:** Short press "Program" button 3 times to start delete Learning to GP switch mode (LED indicator flashes slowly), 180 seconds timeout, repeat the operation.

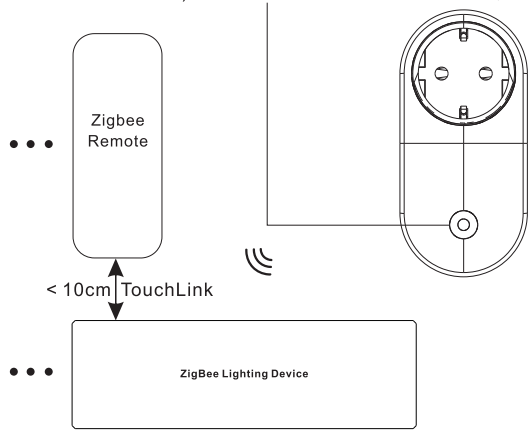


**Step 2:** Set the paired green power switch into Learning mode, please refer to its manual.

**Step 3:** LED indicator will flash 4 times to indicate successful deleting.

## 11. Setup a Zigbee Network & Add Other Devices to the Network (No Coordinator Required)

**Step 1:** Short press "Program" button 4 times to enable the device to setup a zigbee network (LED indicator flashes white twice) to discover and add other devices, 180 seconds timeout, repeat the operation.



**Step 2:** Set another device or remote or touch panel into network pairing mode and pair to the network, refer to their manuals.

**Step 3:** Pair more devices and remotes to the network as you would like, refer to their manuals.

**Step 4:** Bind the added devices and remotes through Touchlink so that the devices can be controlled by the remotes, refer to their manuals.

**Note: 1) Each added device can link and be controlled by max. 30 added remotes.**

**2) Each added remote can link and control max. 30 added devices.**

## 12. ZigBee Clusters the device supports are as follows:

### Input Clusters

- 0x0000: Basic • 0x0003: Identify • 0x0004: Groups • 0x0005: Scenes • 0x0006: On/off
- 0x0402: temperature measurement • 0x0702: Simple Metering • 0x0b04: Electrical Measurement
- 0x0b05: Diagnostics • 0x1000: ZLL Commissioning

### Output Clusters

- 0x0003: Identify • 0x0019: OTA

## 13. OTA

The device supports firmware updating through OTA, and will acquire new firmware from zigbee controller or hub every 10 minutes automatically.

## DE-Entsorgung (Europäische Union)

Bitte das Produkt nicht über den Hausmüll entsorgen! Produkte, die mit diesem Symbol gekennzeichnet sind, müssen gemäß der WEEE-Richtlinie für Elektro- und Elektronik-Altgeräte über lokale Sammelstellen für Elektroschrott entsorgt werden. Altbatterien und Akkus, die nicht fest im Gerät verbaut sind, sowie Lampen, die sich zerstörungsfrei entnehmen lassen, sind vor der Abgabe an eine Sammelstelle vom Gerät zu trennen. Händler sind gesetzlich verpflichtet, Altgeräte vom Endnutzer zurückzunehmen. Alternativ kann das Altgerät an folgende Adresse geschickt werden:

**VYSN GmbH, Siemensstraße 12, 52525 Heinsberg**



## EN-Disposal (European Union)

Please do not dispose of the product with household waste! Products marked with this symbol must be disposed via local e-waste collection points in accordance with the WEEE Directive for Waste Electrical and Electronic Equipment. Used batteries and accumulators that are not permanently installed in the device, as well as lamps that can be removed without being destroyed, must be separated from the device before being handed over to a collection point. Dealers are legally obliged to take back old devices from the end user. Alternatively, the old device can be sent to the following address:

**VYSN GmbH, Siemensstraße 12, 52525 Heinsberg**



## NL - informatie over recycling (Europese Unie)

Gooi het product niet weg met het huishoudelijk afval! Producten gemarkeerd met dit symbool moeten worden afgevoerd via plaatselijke inzamelpunten voor elektronisch afval in overeenstemming met de WEEE-richtlijn voor afgedankte elektrische en elektronische apparatuur. Gebruikte batterijen en accu's die niet permanent in het apparaat zijn geïnstalleerd, evenals lampen die kunnen worden verwijderd zonder te worden vernietigd, moeten van het apparaat worden gescheiden voordat ze worden ingeleverd bij een inzamelpunt. Dealers zijn wettelijk verplicht oude apparaten terug te nemen van de eindgebruiker. Als alternatief kan het oude apparaat naar het volgende adres worden verzonden:

**VYSN GmbH, Siemensstraße 12, 52525 Heinsberg**



## FR-informations sur le recyclage (Union européenne)

Veillez ne pas jeter le produit avec les ordures ménagères ! Les produits marqués de ce symbole doivent être éliminés via les points de collecte des déchets électroniques locaux conformément à la directive DEEE relative aux déchets d'équipements électriques et électroniques. Les piles et accumulateurs usagés qui ne sont pas installés de manière permanente dans l'appareil, ainsi que les lampes qui peuvent être retirées sans être détruites, doivent être séparés de l'appareil avant d'être remis à un point de collecte. Les revendeurs sont légalement tenus de reprendre les anciens appareils de l'utilisateur final. Alternativement, l'ancien appareil peut être envoyé à l'adresse suivante :

**VYSN GmbH, Siemensstraße 12, 52525 Heinsberg**



Points de collecte sur [www.quefairede mesdechets.fr](http://www.quefairede mesdechets.fr)  
Privilégiez la réparation ou le don de votre appareil !

## IT-informazioni sul riciclaggio (Unione Europea)

Si prega di non smaltire il prodotto con i rifiuti domestici! I prodotti contrassegnati con questo simbolo devono essere smaltiti tramite i punti di raccolta locali dei rifiuti elettronici in conformità con la Direttiva RAEE per i rifiuti di apparecchiature elettriche ed elettroniche. Le batterie e gli accumulatori usati che non sono installati in modo permanente nell'apparecchio, nonché le lampade che possono essere rimosse senza essere distrutte, devono essere separati dall'apparecchio prima di essere consegnati a un punto di raccolta. I rivenditori sono legalmente obbligati a riprendere i vecchi dispositivi dall'utente finale. In alternativa è possibile spedire il vecchio dispositivo al seguente indirizzo:

**VYSN GmbH, Siemensstraße 12, 52525 Heinsberg**



## ES-información sobre reciclaje (Unión Europea)

¡No deseche el producto con la basura doméstica! Los productos marcados con este símbolo deben eliminarse a través de puntos locales de recolección de desechos electrónicos de acuerdo con la Directiva WEEE para desechos de equipos eléctricos y electrónicos. Las pilas y acumuladores usados que no estén instalados permanentemente en el aparato, así como las lámparas que puedan retirarse sin destruirse, deben separarse del aparato antes de entregarse en un punto de recogida. Los distribuidores están obligados legalmente a recuperar los dispositivos viejos del usuario final. Alternativamente, el dispositivo antiguo se puede enviar a la siguiente dirección:

**VYSN GmbH, Siemensstraße 12, 52525 Heinsberg**



## DA-Bortskaffelse (EU)

Bortskaf ikke produktet sammen med husholdningsaffaldet! Produkter mærket med dette symbol skal bortskaffes via lokale indsamlingssteder for elektronisk affald i overensstemmelse med WEEE-direktivet for affald af elektrisk og elektronisk udstyr. Brugte batterier og akkumulatører, der ikke er fast installeret i apparatet, samt lamper, der kan fjernes uden at blive ødelagt, skal adskilles fra apparatet, inden det afleveres til et indsamlingssted. Forhandlere er juridisk forpligtet til at tage gamle enheder tilbage fra slutbrugeren. Alternativt kan den gamle enhed sendes til følgende adresse:

**VYSN GmbH, Siemensstraße 12, 52525 Heinsberg**



## PL - Utylizacja (Unia Europejska)

Prosimy nie wyrzucać produktu razem z odpadami domowymi! Produkty oznaczone tym symbolem należy utylizować w lokalnych punktach zbiórki elektroodpadów zgodnie z dyrektywą WEEE dotyczącą zużytego sprzętu elektrycznego i elektronicznego. Zużyte baterie i akumulatory, które nie są zamontowane na stałe w urządzeniu, a także lampy, które można wyjąć bez zniszczenia, należy oddzielić od urządzenia przed oddaniem do punktu zbiórki. Dealerzy są prawnie zobowiązani do odbioru starych urządzeń od użytkownika końcowego. Alternatywnie stare urządzenie można wysłać na adres:

**VYSN GmbH, Siemensstraße 12, 52525 Heinsberg**



## RU - Утилизация (Европейский Союз)

Пожалуйста, не выбрасывайте изделие вместе с бытовыми отходами! Продукты, отмеченные этим символом, должны утилизироваться через местные пункты сбора электронных отходов в соответствии с Директивой WEEE об отходах электрического и электронного оборудования. Исползованные батарейки и аккумуляторы, не установленные в устройстве стационарно, а также лампы, которые можно снять без разрушения, перед сдачей в пункт приема необходимо отделить от устройства. Дилеры по закону обязаны забрать старые устройства у конечного пользователя. Альтернативно старое устройство можно отправить по следующему адресу:  
**VYSN GmbH, Siemensstraße 12, 52525 Heinsberg**



## SW - Avfallshantering (Europeiska unionen)

Vänligen släng inte produkten med hushållsavfallet! Produkter märkta med denna symbol måste kasseras via lokala insamlingsställen för e-avfall i enlighet med WEEE-direktivet för avfall från elektrisk och elektronisk utrustning. Förbrukade batterier och ackumulatörer som inte är permanent installerade i enheten, samt lampor som kan tas bort utan att förstöras, ska separeras från enheten innan de lämnas till en insamlingsplats. Återförsäljare är enligt lag skyldiga att ta tillbaka gamla enheter från slutanvändaren. Alternativt kan den gamla enheten skickas till följande adress:

**VYSN GmbH, Siemensstraße 12, 52525 Heinsberg**



## TR - Bertaraf (Avrupa Birliği)

Lütfen ürünü ev atıklarıyla birlikte atmayın! Bu sembole işaretlenen ürünler, Atık Elektrikli ve Elektronik Ekipmanlara ilişkin WEEE Direktifine uygun olarak yerel e-atık toplama noktaları aracılığıyla imha edilmektedir. Cihazla kalıcı olarak takılmayan kullanılan piller ve akümülatörler ile imha edilmeden çıkarılabilen lambalar, bir toplama noktasına teslim edilmeden önce cihazdan ayrılmalıdır. Bayiler yasal olarak eski cihazları son kullanıcıdan geri almakla yükümlüdür. Alternatif olarak eski cihaz aşağıdaki adrese gönderilebilir:

**VYSN GmbH, Siemensstraße 12, 52525 Heinsberg**



## HU - Ártalmatlanítás (Európai Unió)

Kérjük, ne dobja ki a terméket a háztartási hulladékkal együtt! Az ezzel a szimbólummal jelölt termékeket az elektromos és elektronikus berendezések hulladékaira vonatkozó WEEE-irányelvnek megfelelően a helyi e-hulladék-gyűjtőhelyeken kell leadni. A készülékbe nem tartósan beszerelt használt elemeket és akkumulátorokat, valamint a tönkremenetel nélkül eltávolítható lámpákat a gyűjtőhelyre történő átadás előtt le kell választani a készülékről. A kereskedőknek törvényi kötelezettségük van a régi készülékek visszavételére a végfelhasználótól. Alternatív megoldásként a régi készüléket elküldheti a következő címre:

**VYSN GmbH, Siemensstraße 12, 52525 Heinsberg**

